



LANDAU FORTE ACADEMY
MOORHEAD
PRIMARY PROSPECTUS

WELCOME

FROM THE HEADTEACHER



We would like to welcome you to our Academy. Our aim is to strive to develop your child's knowledge, skills and confidence within a stimulating and caring environment. We offer a broad and balanced curriculum that will encourage your child to become an independent learner.

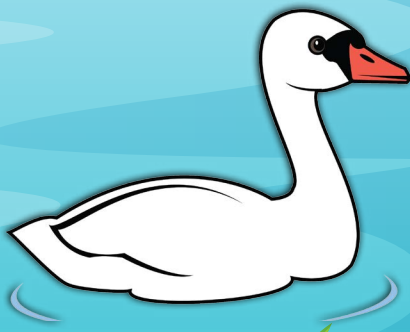
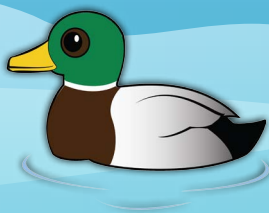
Moorhead School was opened in 1952 as an infant school, and was reorganised in 1971 as a primary school. It became Landau Forte Academy Moorhead on 1 September 2012. There are ten classrooms, a hall and a kitchen, where healthy and nutritious meals are prepared onsite every day. The Academy is very pleasantly situated, with three playgrounds, grass areas, sports and outdoor play areas.

We have high expectations of all children at the Academy. We would like to assure you that we shall all do our utmost to help students enjoy their time with us, and develop them to their full potential.

Fiona M Smith

Headteacher

Landau Forte Academy Moorhead





WELCOME

FROM THE TRUST



Landau Forte Academy Moorhead is a member of the family of schools operated by Landau Forte Charitable Trust. This is an educational charitable trust founded by Martin Landau and the Forte family over twenty years ago.

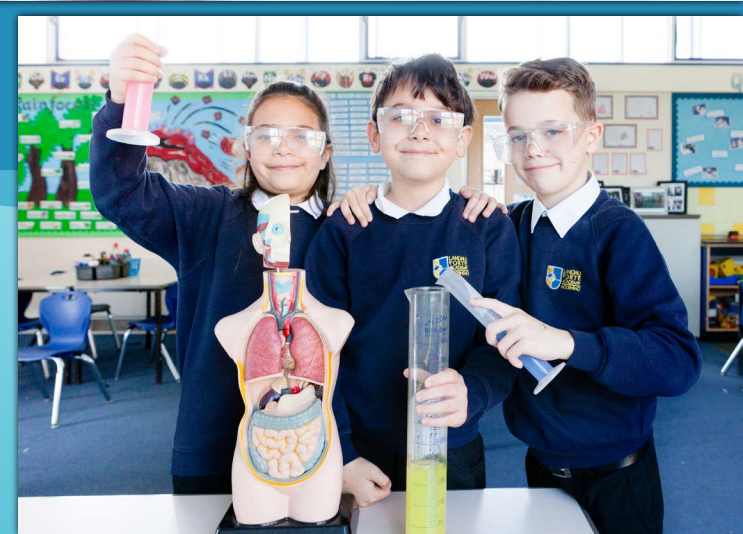
The Trust is now educating over 3,000 students across its six Academies consisting of two in the Primary sector, three secondary, and a purpose built Sixth Form Academy.

The Trust expects each of the Academies to provide a Landau Forte style of education, which is distinctive, high quality and critically releases the potential of each student, enabling them both individually and collectively to be the best that they can be.

Whilst the Academies each have their individual specialisms, the common expectation of high standards of learning, teaching, attainment and achievement are common.

Dr. Antony Edkins

Chief Executive
Landau Forte Charitable Trust



Our Academy Aims

- To foster and develop a parental partnership in which parents are actively involved in the education of their children, and in the life and work of the Academy.
- To provide all children and adults with a happy, secure and stimulating learning environment where individual needs, talents and learning styles are identified, addressed and nurtured; and in which all children and adults reach for their full potential.
- To promote all children's spiritual, moral, social and cultural development within a caring community that celebrates diversity.
- To enable children and adults to develop a sense of self worth and a sense of personal and collective achievement, to be independent and to take responsibility for their own actions.

Our Academy Values

Our motto is: "We are all Stars!" - Landau Forte Academy Moorhead endeavours to promote values and principles such as a love of learning, confidence, positive self esteem and respect, which in the long term we believe will raise standards and create productive citizens of the future.

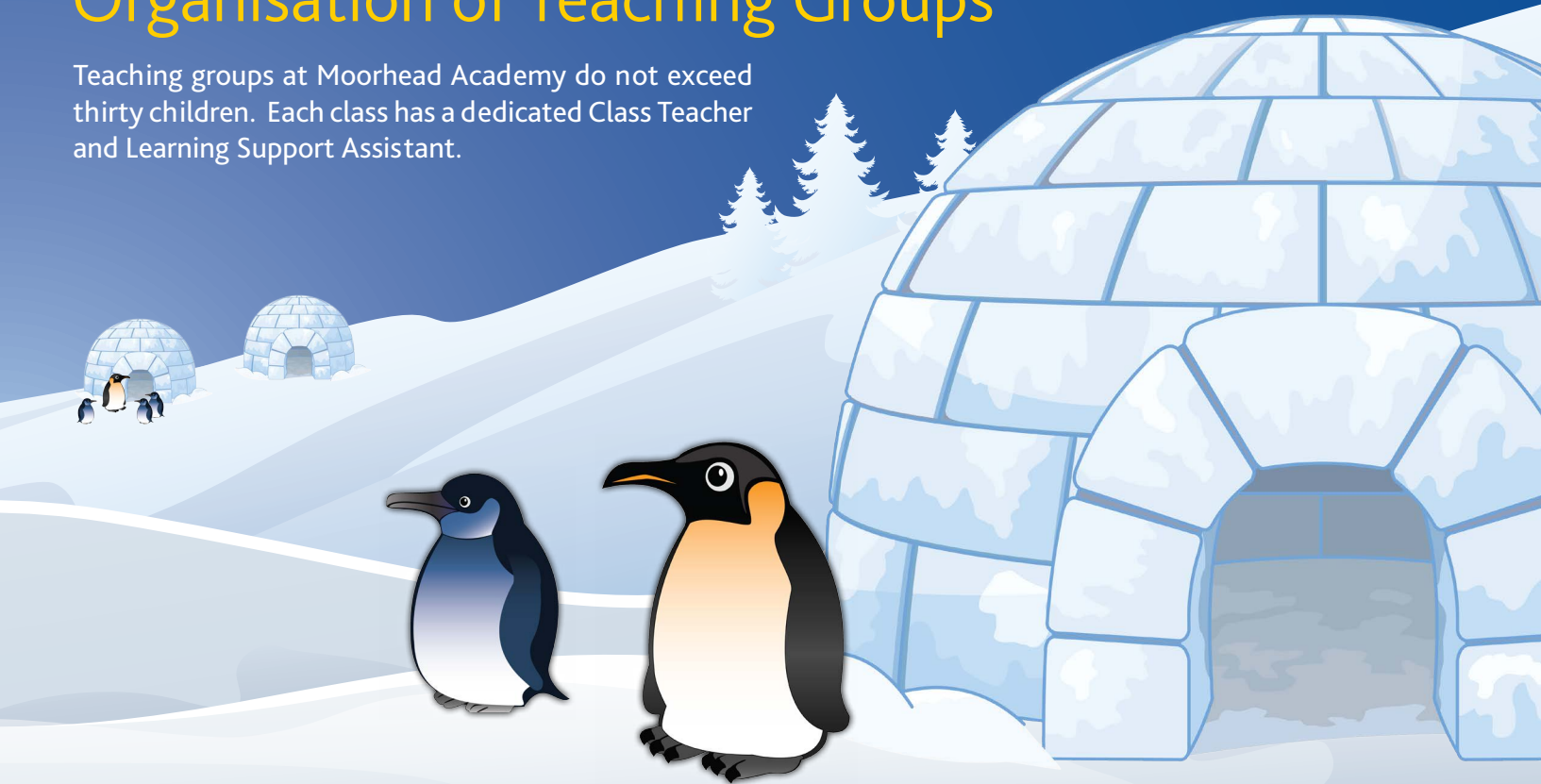


Together we make a difference



Organisation of Teaching Groups

Teaching groups at Moorhead Academy do not exceed thirty children. Each class has a dedicated Class Teacher and Learning Support Assistant.



Curriculum

At our Academy we aim to provide an education that stimulates children's curiosity about the world around them, which challenges them to ask how, why and what things are. We aim to make the children's learning relevant to their lives in today's world, and introduce them to a wide range of learning experiences.

Each child is valued as an individual. We cater for their differing rates of development and look for progression in the learning of every child, encouraging everyone to reach their full potential. Extra support is given to any child not attaining an appropriate level of learning. The basic skills of English and maths are vital and we place a strong emphasis on the development and use of these skills throughout the Academy.

Much of the children's learning is delivered through a cross-curricular topic based approach. The topics are carefully planned to ensure that students cover all areas of the National Curriculum at an appropriate level.



Reporting & Assessment

We encourage and value the partnership we have with parents. Learning is most effective when we work together. Informal contact is daily and parents' evenings are planned to discuss progress and achievement. At the end of the academic year, a written report is sent home. During the year, staff continuously assess the children so they have a clear idea of progress, which enables new targets to be set. This gives the children steps to improve their work. A combination of teacher assessment and Standard Assessment Tests (SATs) in maths and English measure progress in Years 2 and 6 and their achievements are shared with parents. Children in Year 1 are tested on their phonic knowledge and the results are reported to the government.

Sport

Sport is important because it can provide challenge and pleasure throughout life, and contributes to a healthy lifestyle. Through sport, we aim to develop the children's perseverance, co-operation and fair play, as well as their ability to cope with success and failure.

The Arts

The Arts are important for the children's cultural and spiritual development. Children are given opportunities to perform, through participation in assemblies, dances, plays and concerts. Visits from artists, theatre groups and musicians are positively encouraged.

Homework

Homework is an important part of the children's learning, and we ask that you encourage and support your children. Homework is set each Wednesday and is handed in the following Monday. Parents are expected to read with their children each evening

Extra-Curricular Activities

We offer a wide range of activities which aim to develop the children's skills, team work and enjoyment. The Academy operates a before and after hours club, that offers parents child care arrangements from 7:30am – 8:45am & 3:15pm – 4:15pm.





Hours of Academy Opening

The Academy day starts at 8:45am. Please do not send your child to the Academy more than ten minutes before this.

	Infants	Juniors
Morning Session	8:45am - 12:00pm	8:45am - 12:15pm
Lunch	12:00pm - 1:00pm	12:15pm - 1:00pm
Afternoon Session	1:00pm - 3:15pm	1:00pm - 3:15pm



Positive Behaviour

At Landau Forte Academy Moorhead we have high expectations of behaviour. We believe that children should be praised and rewarded for their hard work, effort, attendance and behaviour, through regular verbal praise, stickers, certificates and encouragement from staff.

We aim to:

- Create an ethos that makes everyone in the academy feel valued and respected.
- Promote good behaviour through positive role models and rewards.
- Encourage kind, honest and thoughtful behaviour.
- Develop respect for their own and other people's property.
- Develop a feeling of responsibility and care for the environment.

Our Academy rules are:

- Be gentle
- Be kind and helpful
- Be respectful
- Work hard
- Listen to people
- Be honest
- Look after property

As an Academy, we recognise the importance of parental support in maintaining our high standards of behaviour.



Admission of Children

The Board of Governors of Landau Forte Academy Moorhead is the admissions authority. To apply for a place for your child, you should complete the application form sent out by Derby City Council at the start of the Academic year prior to the intended September start date. This form asks you to state your preferred school. Please return this form as soon as possible.

Your child will start school in the September prior to their fifth birthday.

Transfer to Secondary School

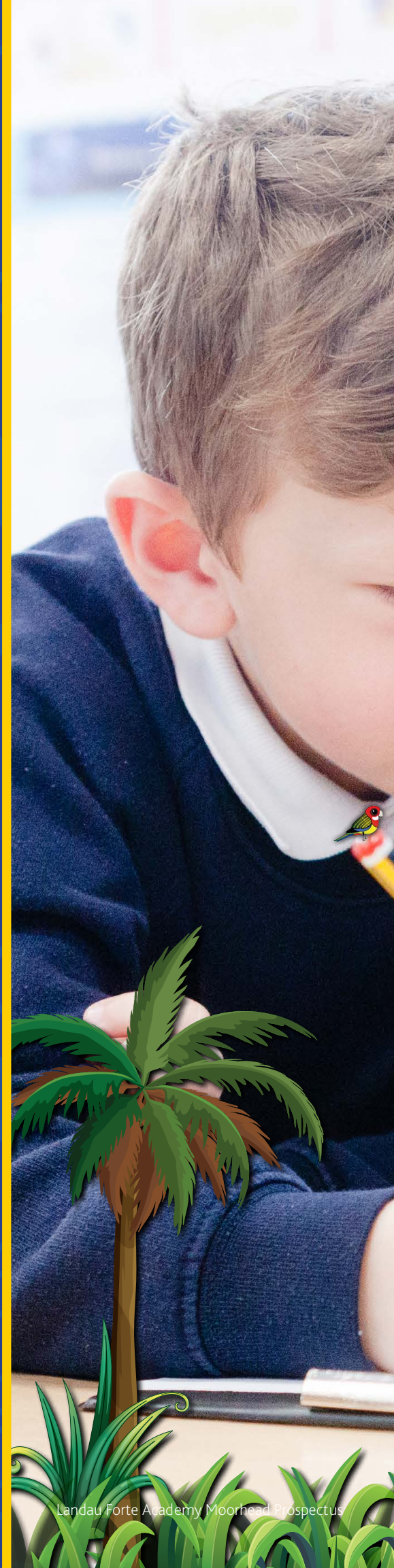
Transfer to secondary school is carefully planned to help support your child. Children from Moorhead Academy attend a range of secondary schools across the City. Applications are made through Derby City Council.

Healthy Schools

At our Academy, we encourage the children to be healthy. Toast is available for purchase at break time for our junior children or your child may bring in fruit or an alternative healthy snack. Our Academy meals are prepared and cooked on-site, a vegetarian option is available. Please note we do not serve Halal meat. Your child may be eligible for free meals. Please ask for assistance in applying. Alternatively, your child may bring a packed lunch and drink from home.

Children with Special Educational Needs

The Academy makes excellent provision for children with special educational needs. A specialist SEN co-ordinator is employed by the Academy to support children with specific needs.







LANDAU FORTE ACADEMY
MOORHEAD

Brackens Lane
Alvaston
Derby
Derbyshire
DE24 0AN

t: 01332 571162 **e:** post@lfadm.org.uk **w:** lfadm.org.uk